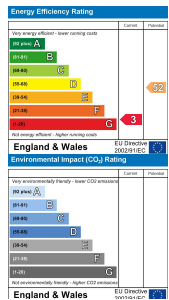


The Hawthorns Stepaside, Narberth, Pembrokeshire, SA67 8NY

- Detached House
- Self Contained Unit
- Development Potential
- Outdoor Swimming Pool & Outhouse
- Walking Distance to Beach
- Two Reception Rooms
- Six Bedrooms
- Approx. 0.5 acres
- Ample Driveway Parking
- EPC Rating G

Offers In Excess Of £375,000

COMPUTER-LINKED OFFICES THROUGHOUT WEST WALES and Associated office in Mayfair, London



Nat West Chambers, Tudor Square, Tenby, Pembrokeshire, SA70 7AJ
EMAIL: tenby@westwalesproperties.co.uk

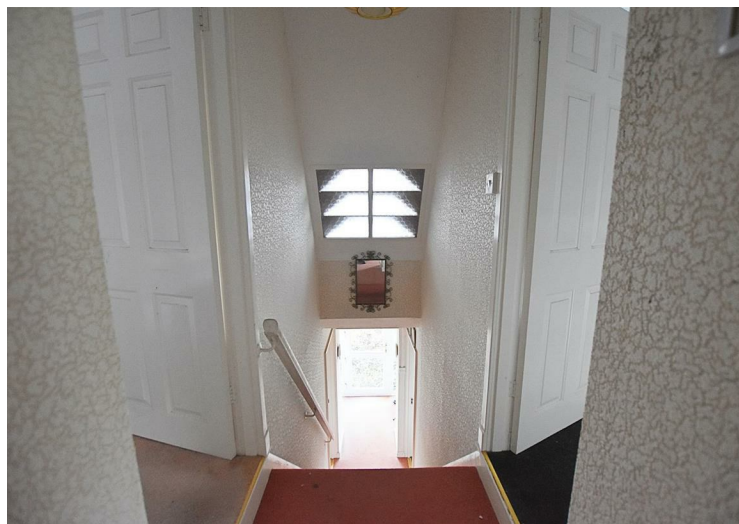
TELEPHONE: 01834 845584



Nat West Chambers, Tudor Square, Tenby, Pembrokeshire, SA70 7AJ
EMAIL: tenby@westwalesproperties.co.uk TELEPHONE: 01834 845584

The Agent that goes the Extra Mile



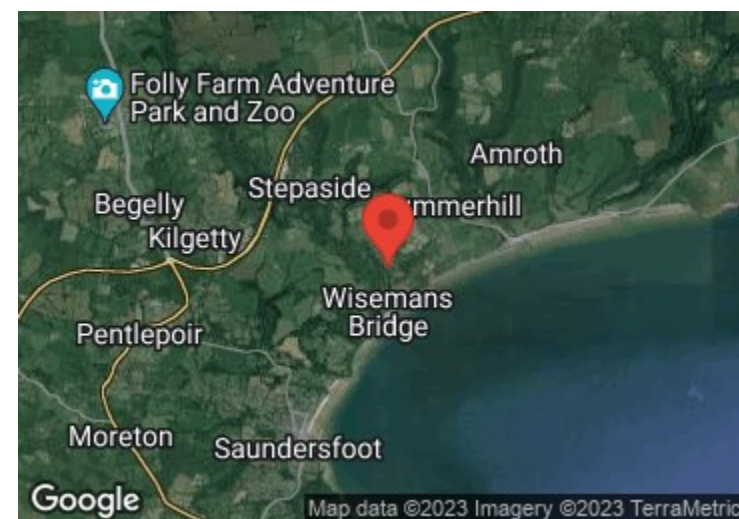
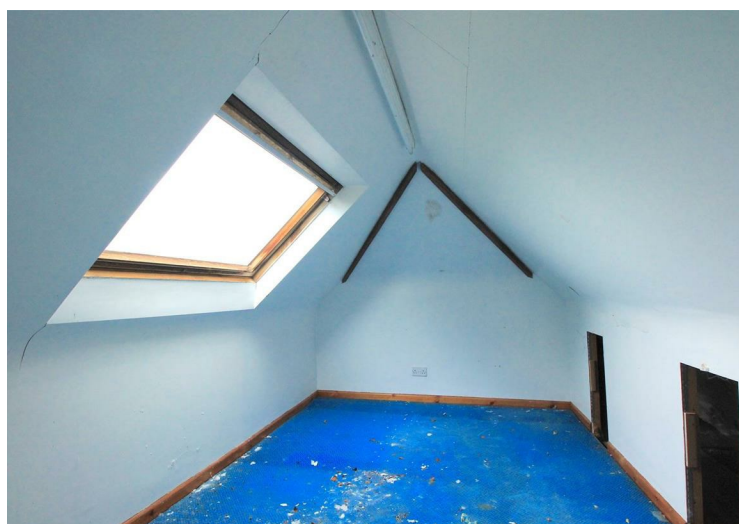


An opportunity to purchase this detached house, sitting in approx 0.5 acres in the sought after location of Pleasant Valley, Stepside with a vareity of beaches such as Wisemans Bridge, Saundersfoot and Amroth all within 2 miles of your doorstep. The accommodation, in need of renovation is over three floors. The ground floor boasts; entrance porch, living room, dining room, kitchen fitted with a range of units leading through to the utility room providing rear access. The ground floor provides a self contained unit, with two bedrooms, a kitchenette and bathroom with its own access to the rear. The first floor boasts four double bedrooms, one with a balcony overlooking the country views beyond and access to the loft room. The property has great potential to be a wonderful family home.

Externally, there is a driveway providing ample off-road parking from the road down to the property. The garden, which borders a nearby stream has a variety of trees and shrubbery boasting an outdoor swimming pool alongside a stone outbuilding with a sitting room and kitchenette within. The garden provides access to a public footpath, which leads directly to the idyllic Wisemans Bridge beach.



Pleasant Valley is a beautiful wooded valley in Stepside, near the Amroth/Wisemans Bridge area which lies on the South Pembrokeshire Coastline at the start of the stunning 186 mile Pembrokeshire Coast Path. The property is just a 20 minute walk along the coast to Saundersfoot. The seaside village of Amroth itself is a popular destination for holiday makers, with many seasonal shops, cafe's and public houses on offer. There are many popular attractions nearby, including Colby Woodland Gardens and Amroth Castle. A short drive will bring you to the popular seaside resort of Tenby, and slightly further afield is Carmarthen, providing many high street shops and amenities, and easy access to the M4 corridor.



DIRECTIONS

From the Tenby Office, head out of town towards New Hedges. At the roundabout take the first exit towards Pentlepoir and continue towards Kilgetty. At the Kilgetty roundabout take the third exit onto the A477. Take the next right turning into Stepside, then take the next left turning. Continue on this road past the chapel and the property can be found further down on the right hand side denoted by our For Sale board. WHAT 3 WORDS - statement / wanting / beaten

See our website www.westwalesproperties.co.uk in our TV channel to view our location videos about the area.